
GOODBYE, MEMORY ERRORS!

KARL DONAUBAUER

KARL DONAUBAUER

Access developer, MVP

Vienna, Austria, Europe, Earth

office@donkarl.com

AccessDevCon.com

Access DevCon Vienna

April 25+26, 2020





There isn't enough memory to perform this operation



System resources exceeded



Out of memory

AGENDA

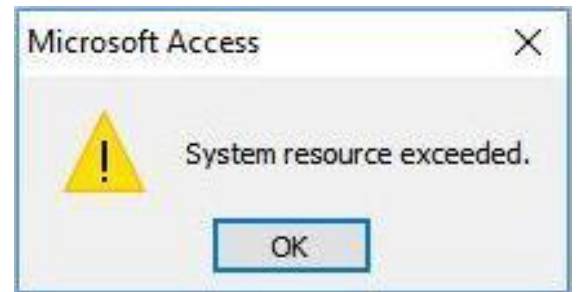
- Basics
 - Virtual memory, 32 bit vs. 64 bit
- Problems
 - Examples, errors
 - Measures, thresholds
- Solutions
 - Classical methods
 - LAA switch

VIRTUAL MEMORY (VM)

- OS provides a process with abstracted memory = VM
- exe, dlls, add-ins... mapped into Virtual Address Space
- RAM or swap files (hard disc, optical drive, flash etc.)
- 32 bit programs → max. addressable VM = 4 GB
 - Evenly divided between process and Windows (by default)
 - **2 GB for the process** + 2 GB reserved for Windows
- 64 bit programs → VM limit = 16 TB

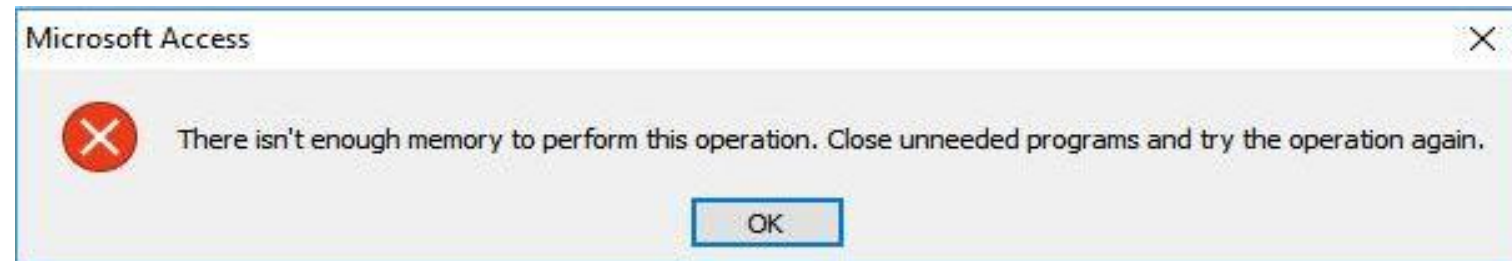
VIRTUAL MEMORY

- Access needs more VM with each version
 - The higher the version the less VM for your application
 - Memory problems at version upgrades
- Popular misconceptions
 - ~~High amount of physical RAM → doesn't help~~
 - ~~2 GB file size limit of accdb → nothing to do with it~~



PROBLEM SITUATIONS

- Many forms or multiple heavy forms
 - with subforms, combos, tab controls etc.
- Complex queries
- Complex reports
- Multiple PDFs
- Combinations



MEASURE VM

- API: GlobalMemoryStatusEx
- MSFT tool: vmmap.exe

credits: Stephan Kraft (dokuwork)

CLASSIC SOLUTIONS

- Queries

- Optimize index use, combine multiple queries

- Reports

- No combos etc. but include the tables in the report query
 - Use work tables instead of queries to deliver report data

- Forms

- „Late loading“ of subforms, tab controls, combos etc.

LARGEADDRESSAWARE (LAA)

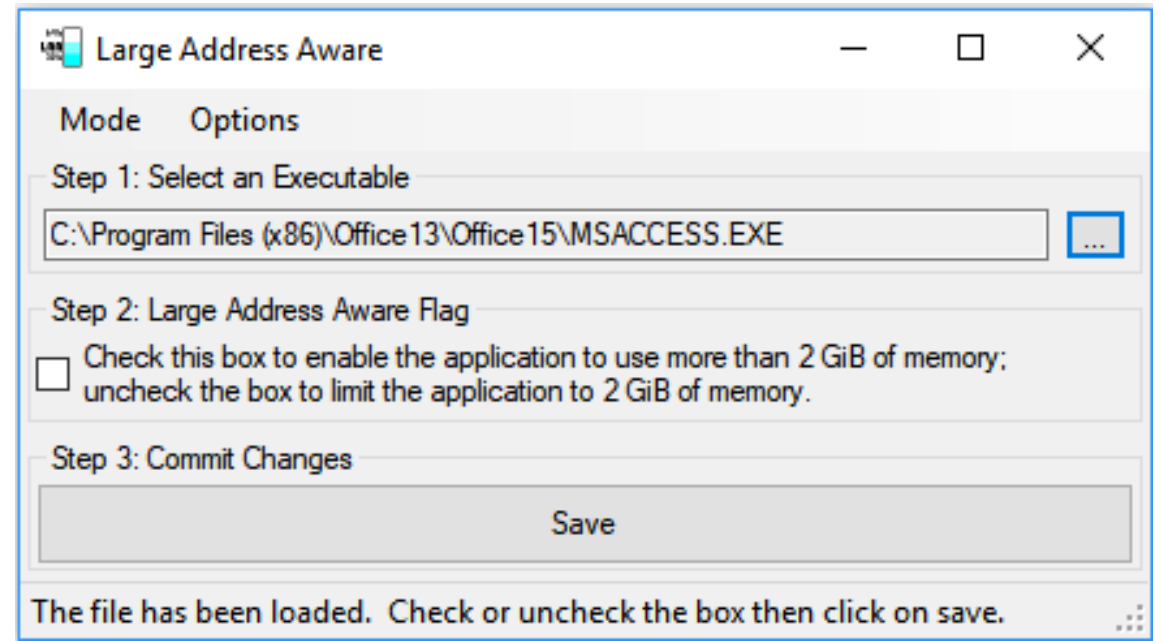
- Win 64 bit doesn't need the 2 GB VM share
- Flag in the (PE) header of Windows exe files like... **msaccess.exe**
- Tells Windows that exe can handle >2 GB VM
 - Win 64 bit process gets 4 GB of VM

SET LARGEADDRESSAWARE (LAA) – METHOD 1

- Visual Studio (credits: Björn Fox, [Avantgarde](#))
 - editbin.exe
 - Make a security copy of your msaccess.exe
 - Start command prompt as administrator
 - "C:\Program Files (x86)\Microsoft Visual Studio 12.0\VC\bin\editbin.exe" /LARGEADDRESSAWARE
"C:\Program Files (x86)\Microsoft Office\Office14\MSACCESS.EXE"

SET LARGEADDRESSAWARE (LAA) – METHOD 2

- Free tool Large Address Aware.exe
 - 10 year old “gamer tool”
 - Only requires .NET Framework 3.5 or newer



LARGEADDRESSAWARE HURDLES

- Admin rights
- Microsoft updates exchange msaccess.exe

TO MICROSOFT

- Set LARGEADDRESSAWARE as default!
 - Excel and Outlook have it for years
 - Do it for ALL Access versions in support (not only 365)
- UserVoice wish – LAA as default

Vote for it!

THANKS, I'M DONE

Questions?

